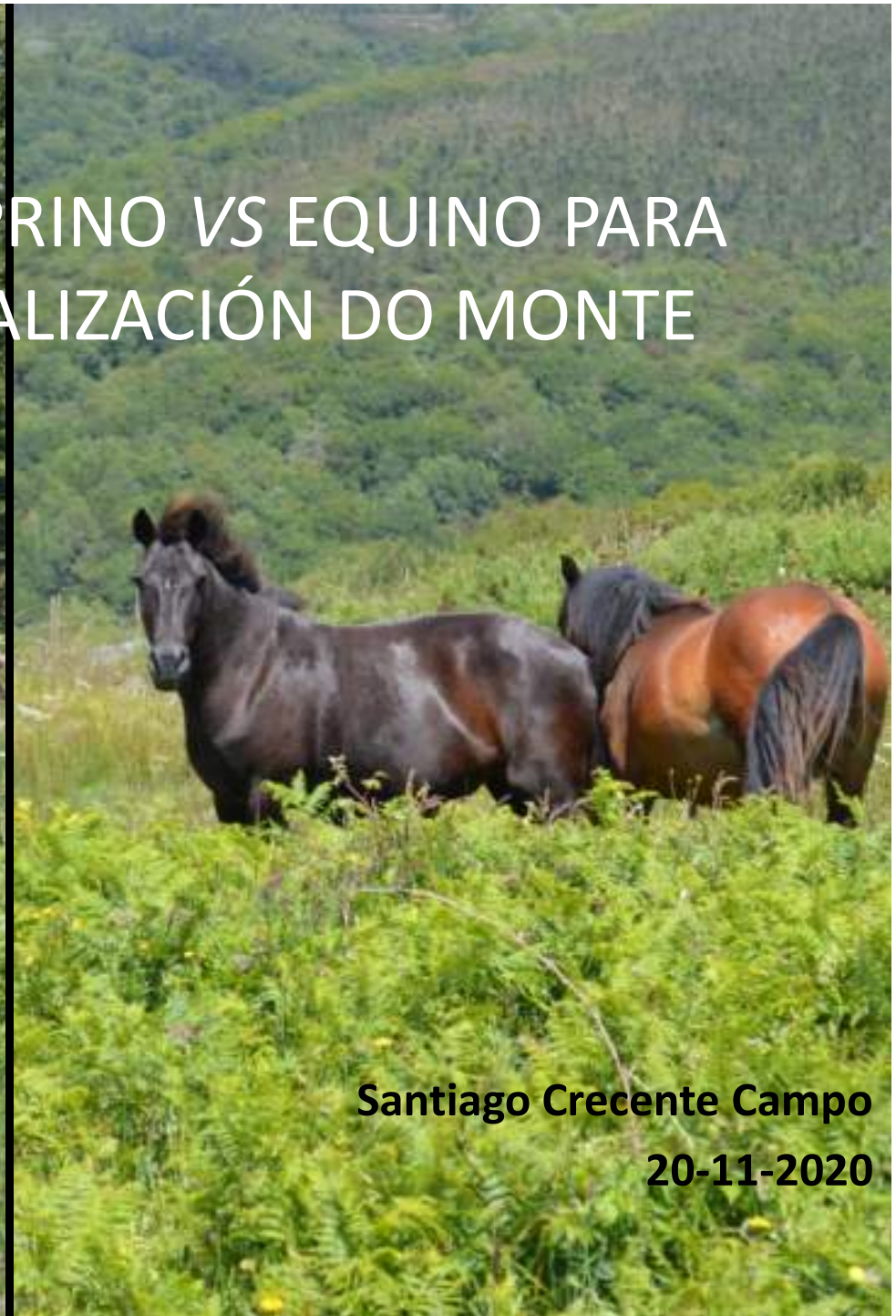


PASTOREO CON CAPRINO VS EQUINO PARA EVITAR A MATORRALIZACIÓN DO MONTE



Santiago Crecente Campo

20-11-2020

PROYECTO RTA2017-00081-C04

ESTRATEGIAS PARA FRENAR LA MATORRALIZACIÓN Y FOMENTAR LA PRODUCCIÓN ANIMAL EN PASTOREO EN LA MONTAÑA CANTÁBRICA Y GALLEGA

Subproxecto 1 –



Subproxecto 2 –



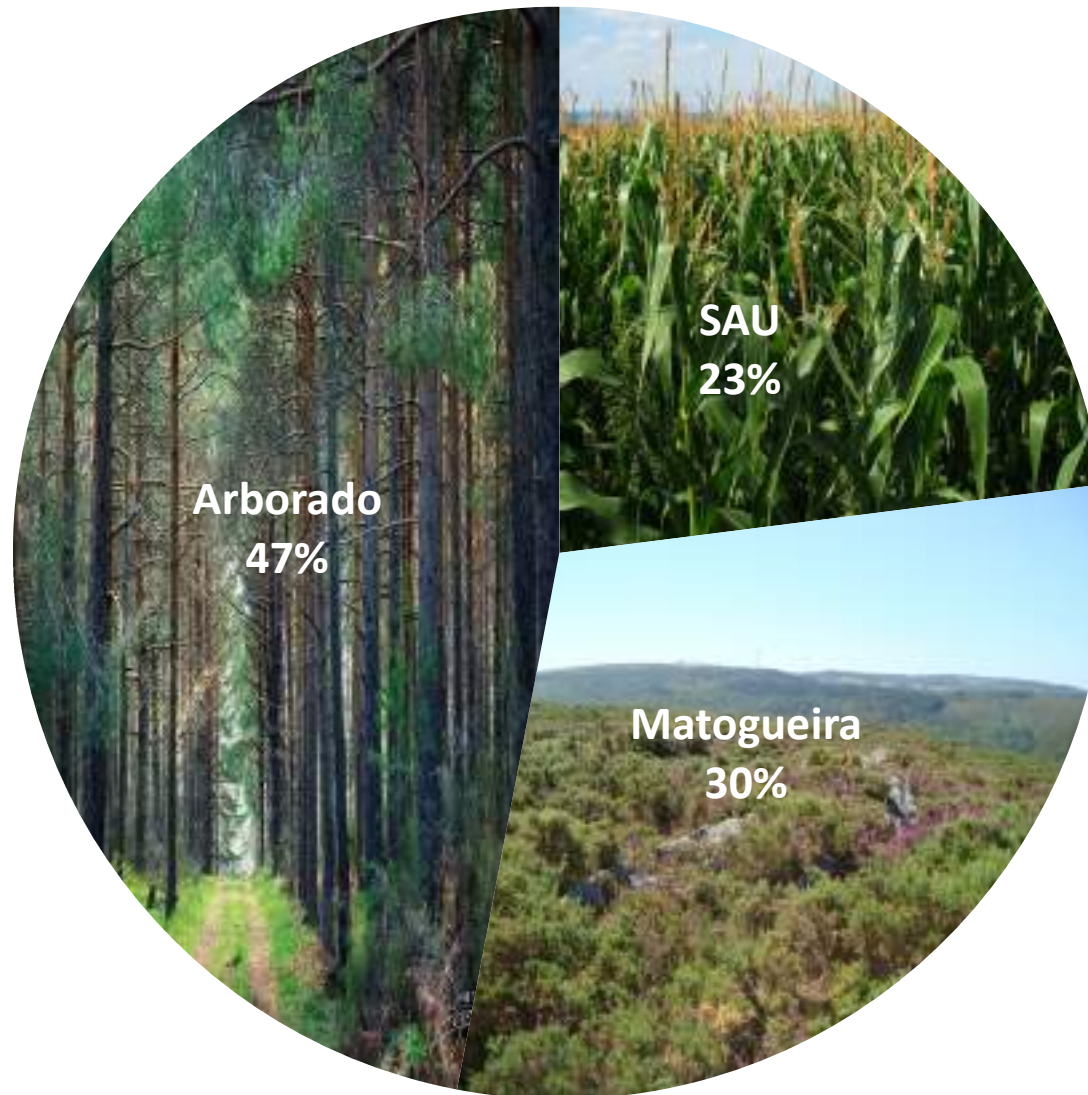
Subproxecto 3 –



Subproxecto 4 -

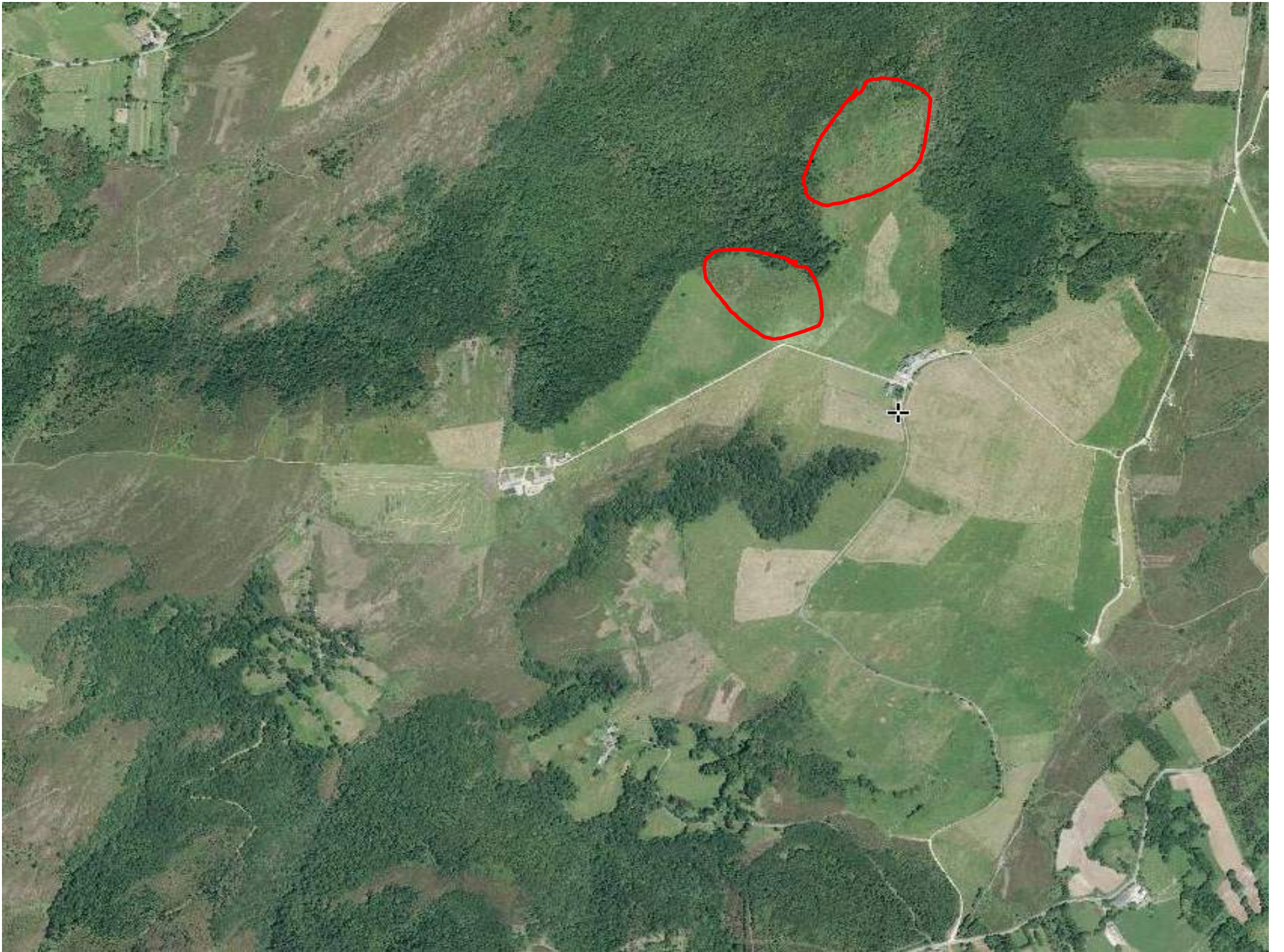


Superficie rústica en Galicia



Ensaio

- Transformación de superficies a matorral a través do pastoreo con bestas e cabras.
- Pastoreo rotacional en 60/40% de pasto mellorado/non mellorado.
- Bestas de Pura Raza Gallega, cunha carga gandeira de 1,5 besta por ha.
- Cabras de raza Cabra Galega, cunha carga gandeira de 12 cabras por ha.
- A superficie mellorada foi pastoreada durante a primavera, pasando á non mellorada a principios do verán.
- Na superficie a matorral realizáronse 3 parcelas por especie animal.
- Realizouse unha estimación visual da superficie ocupada por cada especie ou grupo de especies vexetais.





yeguas

cabras



cabras

yeguas

cabras

yeguas









Outono 2018



Outono 2018





maio 2019







xuño 2019





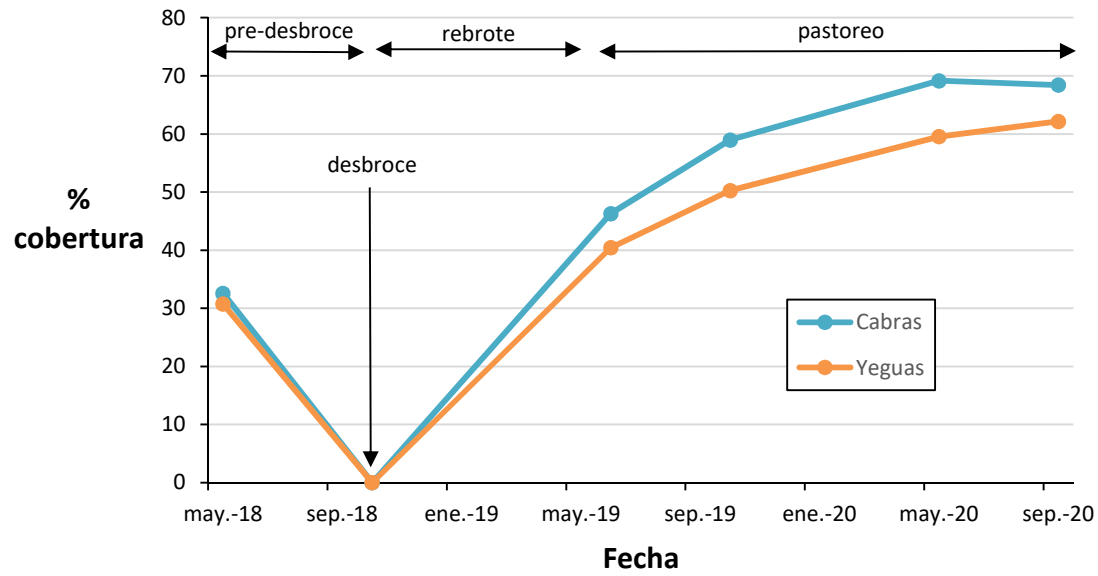






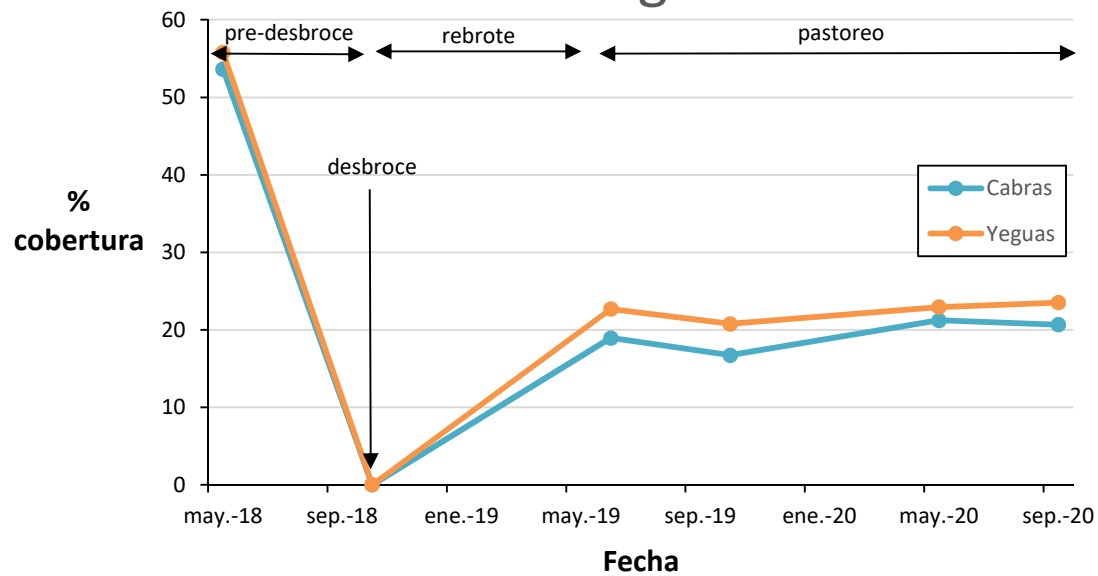


Herbáceas

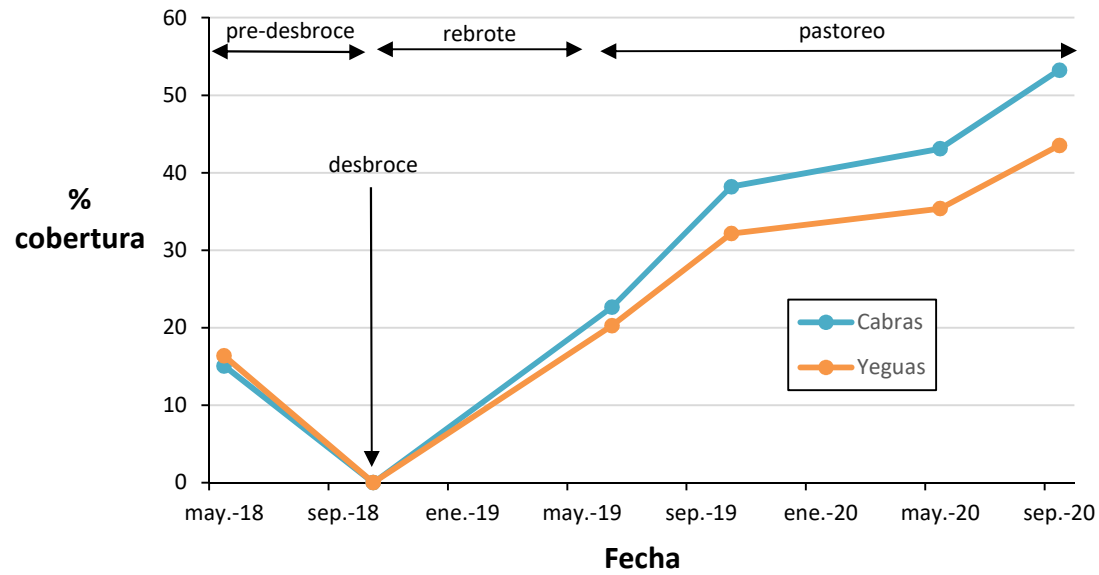


% cobertura

Matogueira

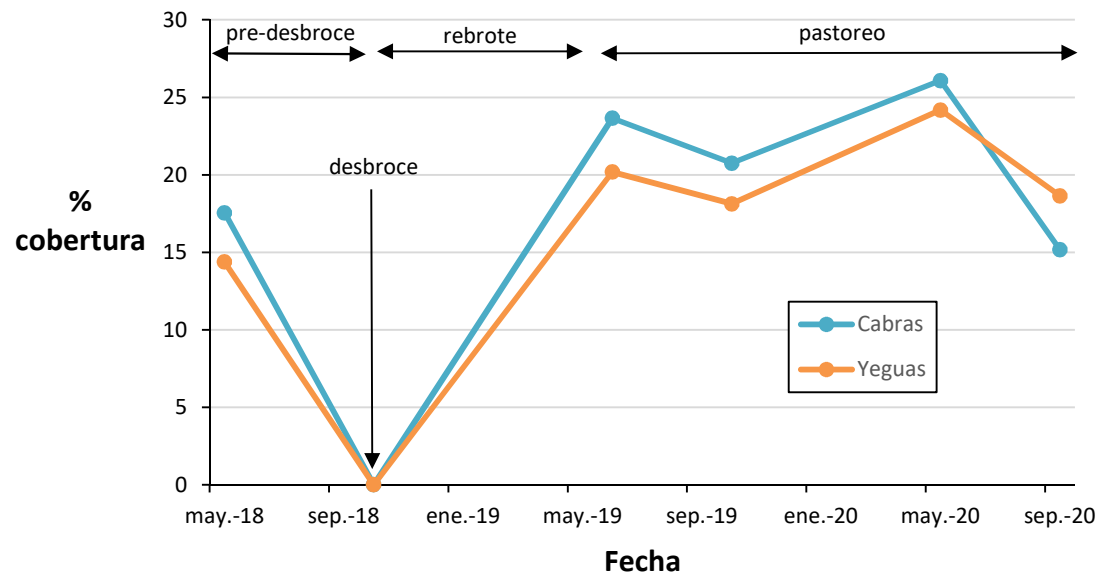


Gramíneas

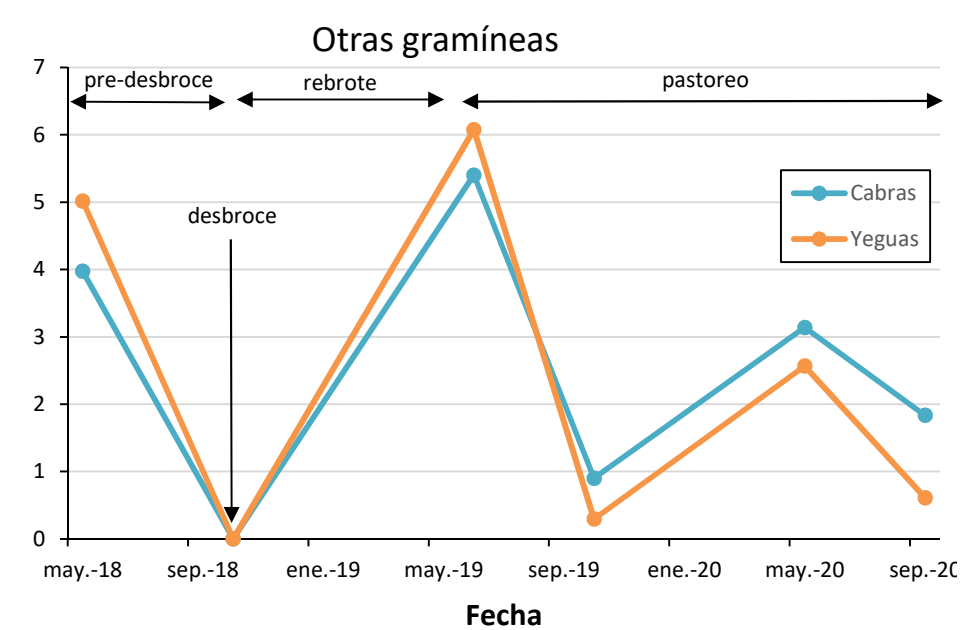
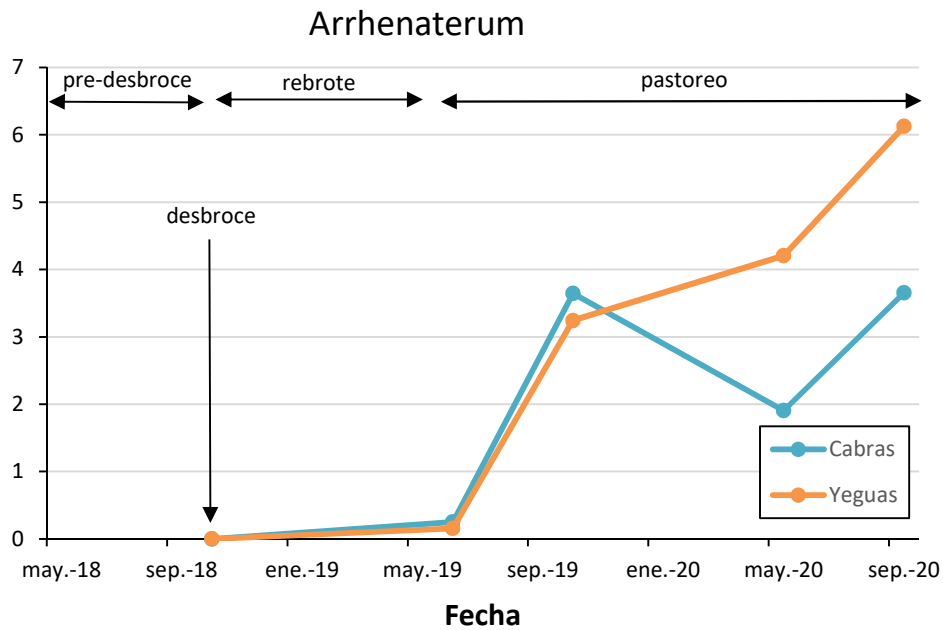
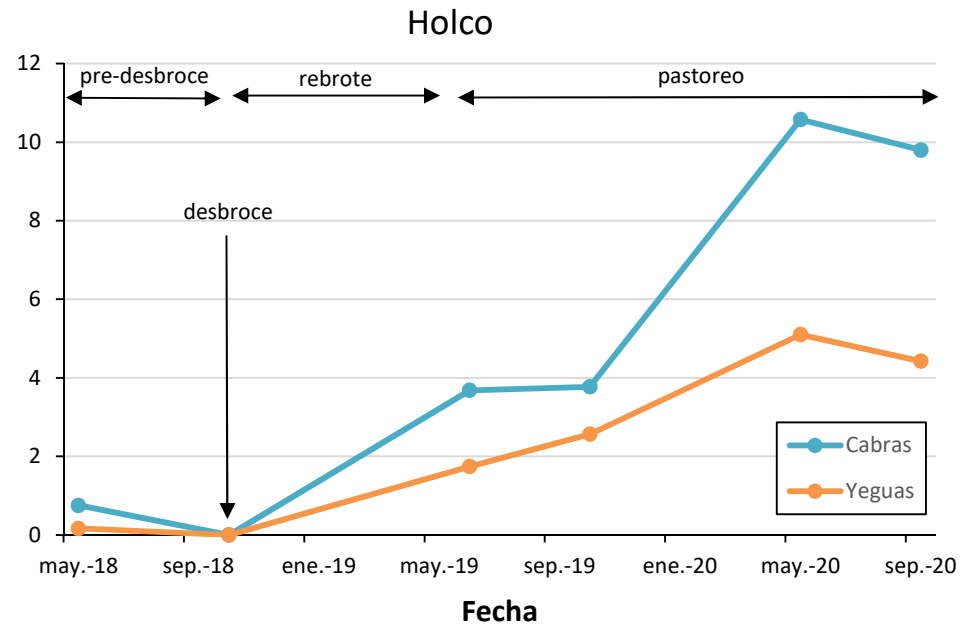
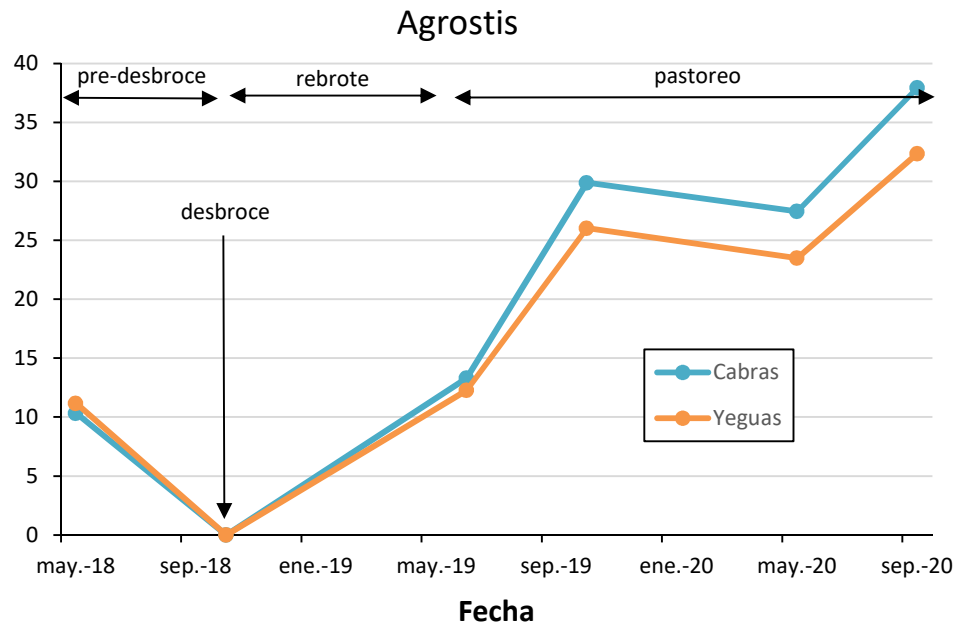


Herbáceas

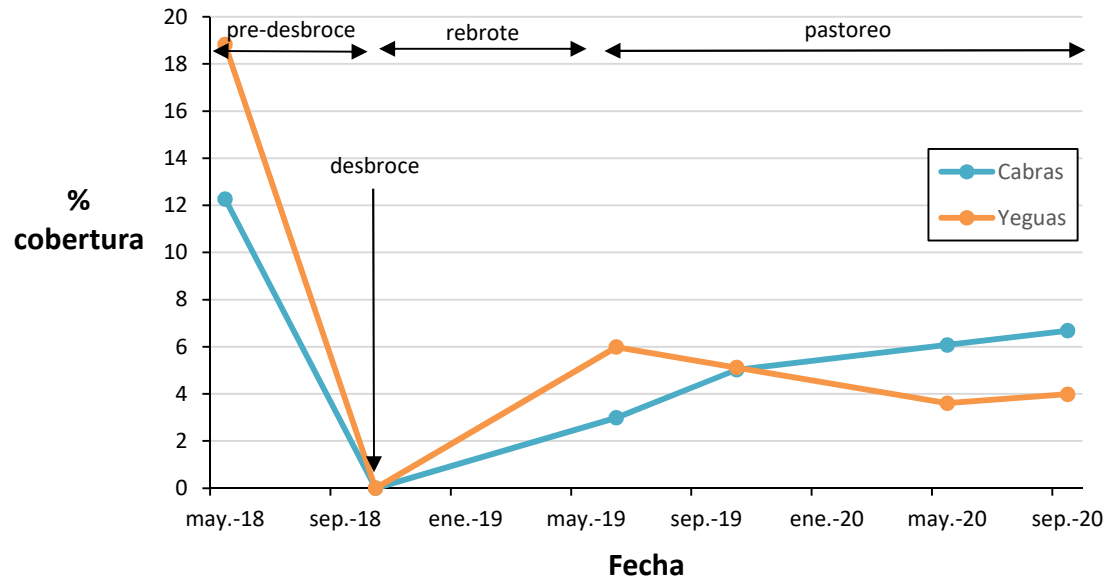
Outras spp



Gramíneas

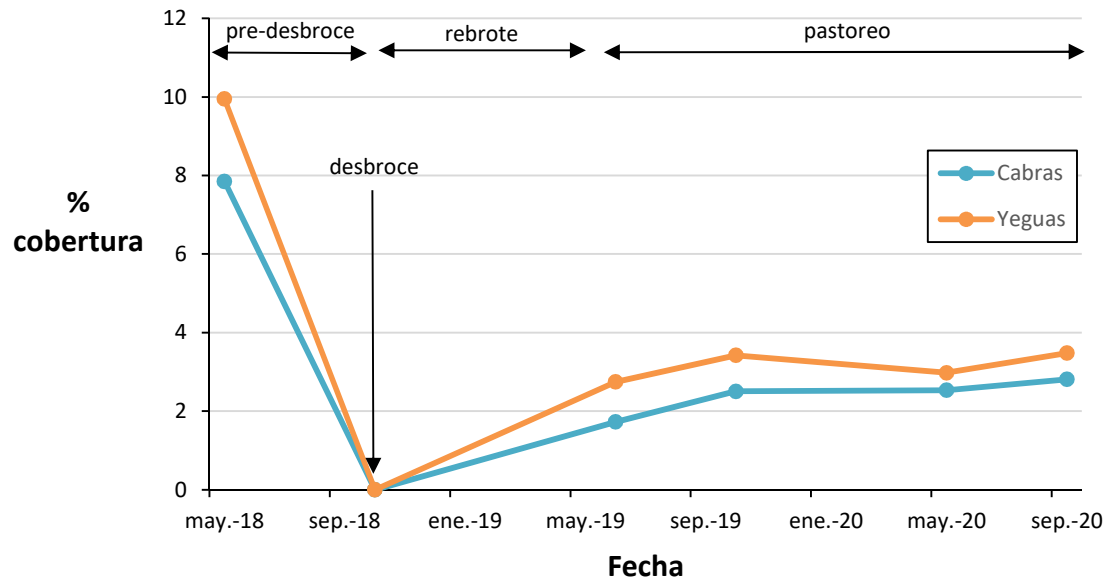


Toxo

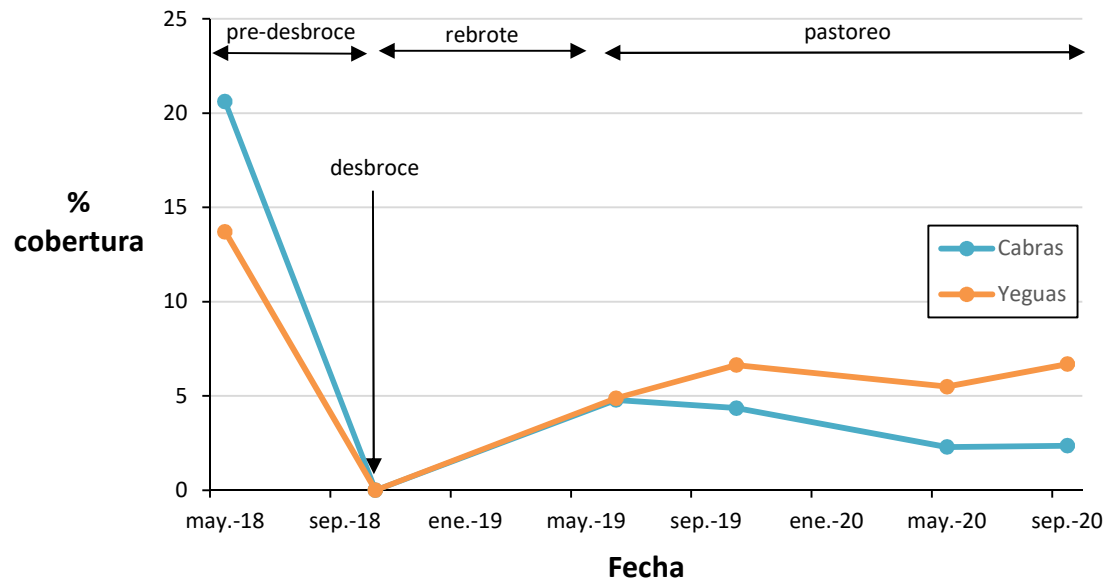


Matogueira

Toxo gateño

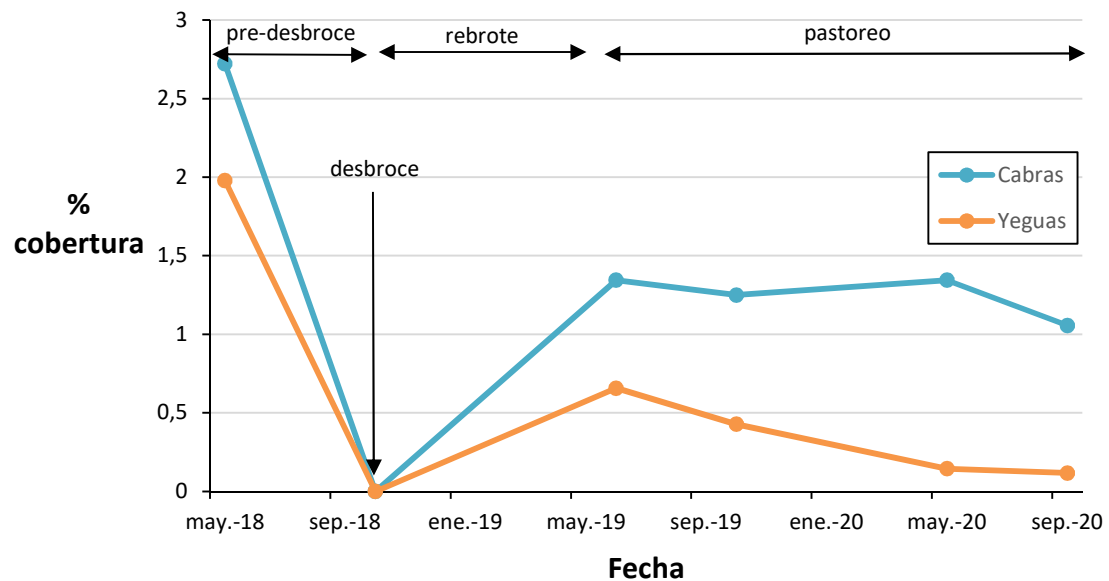


Silvas

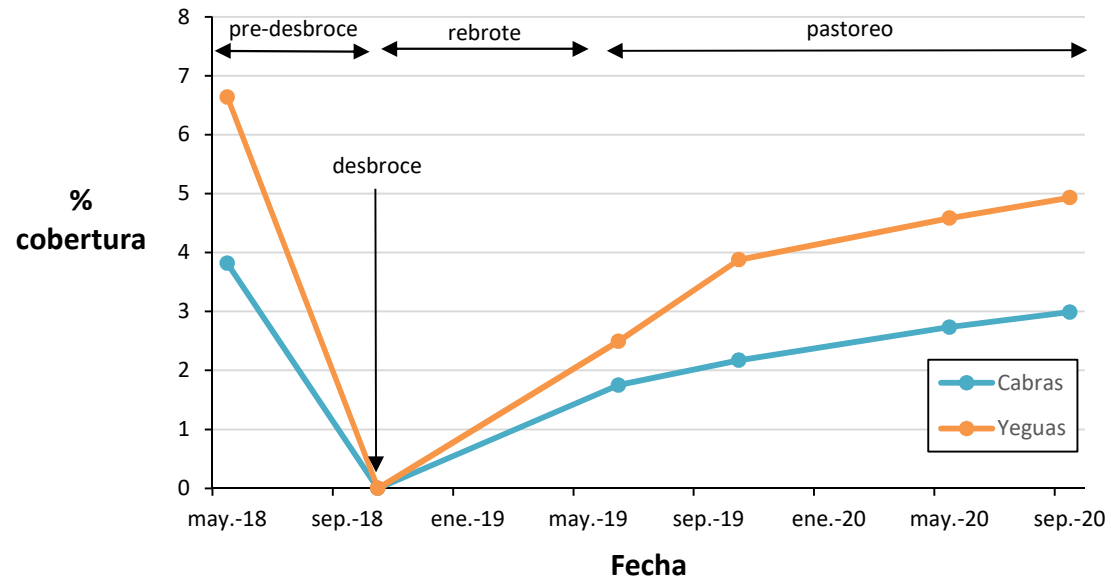


Matogueira

Xestas

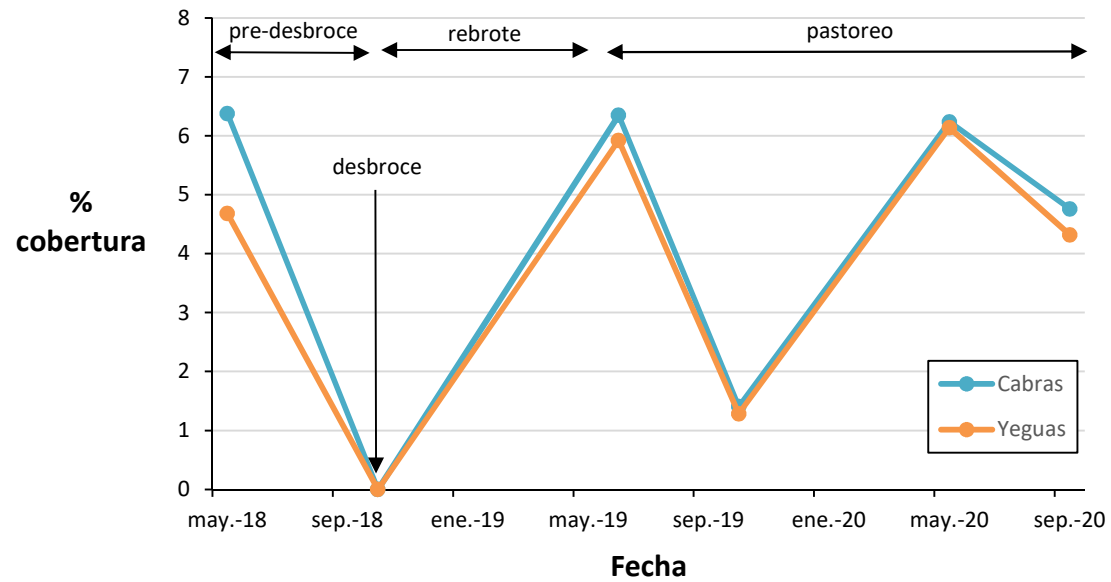


Brezo

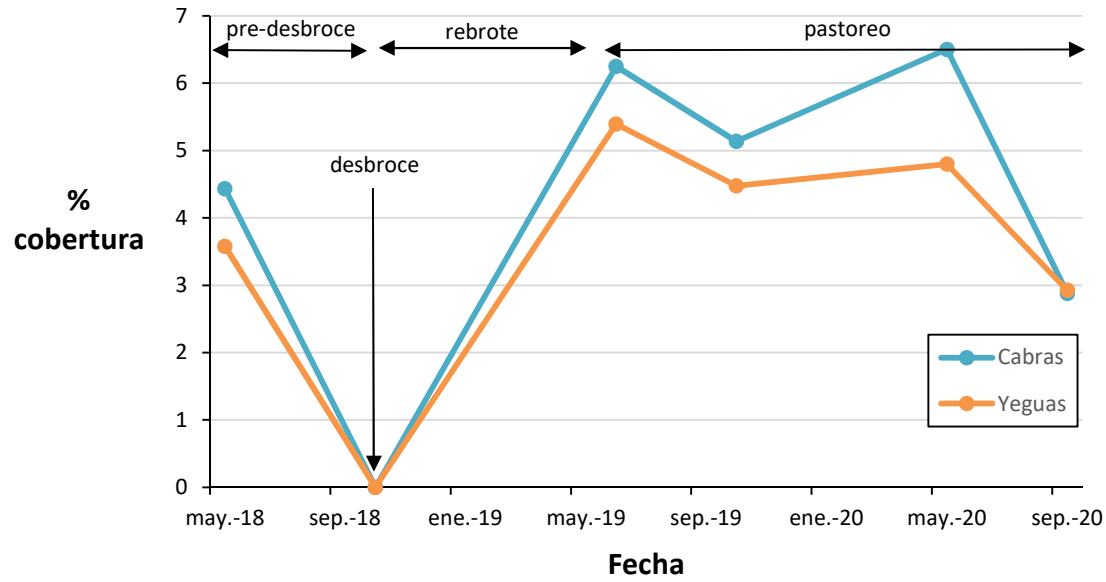


Matogueira

Fentos

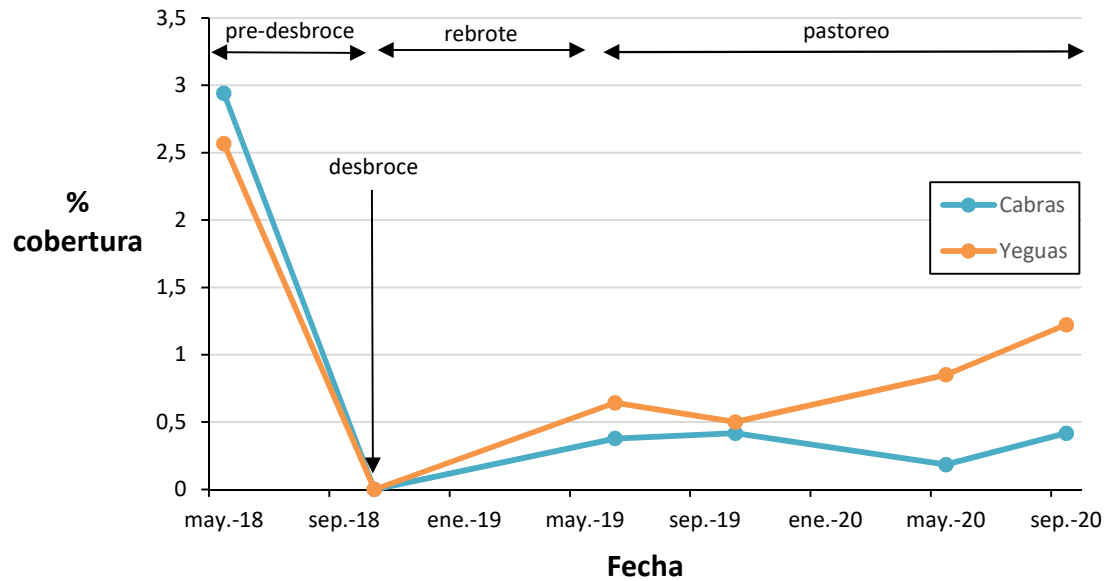


Cardos

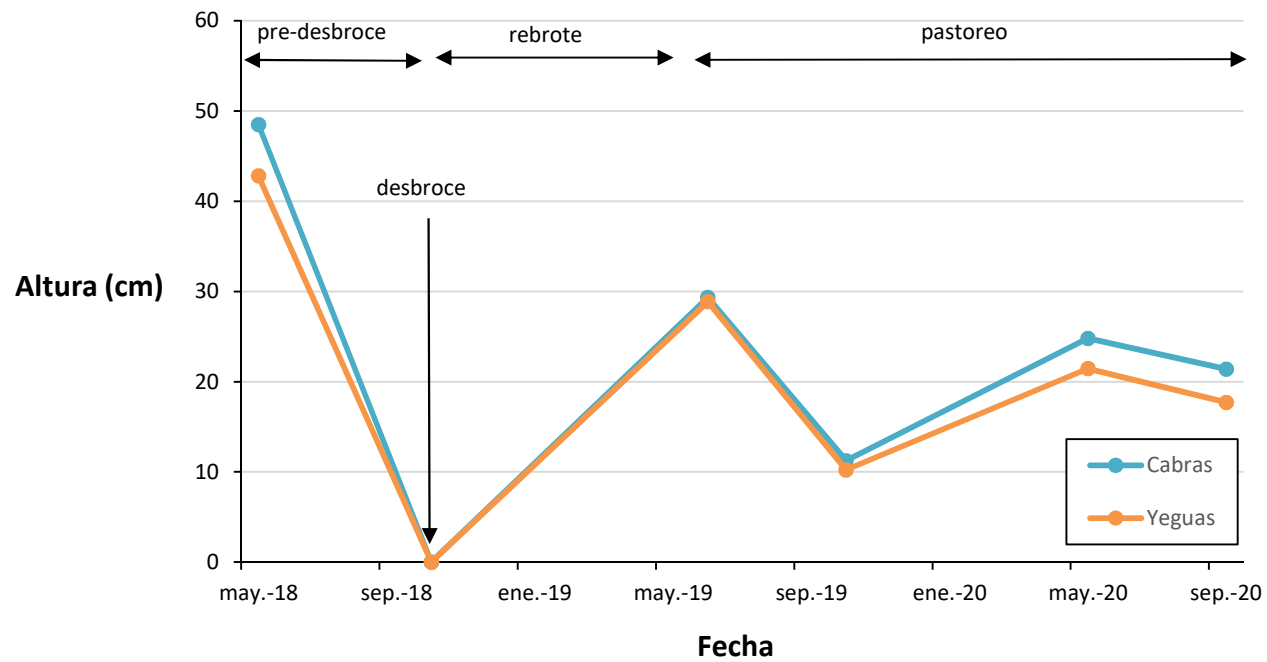


Matogueira

Árboles-arbustos

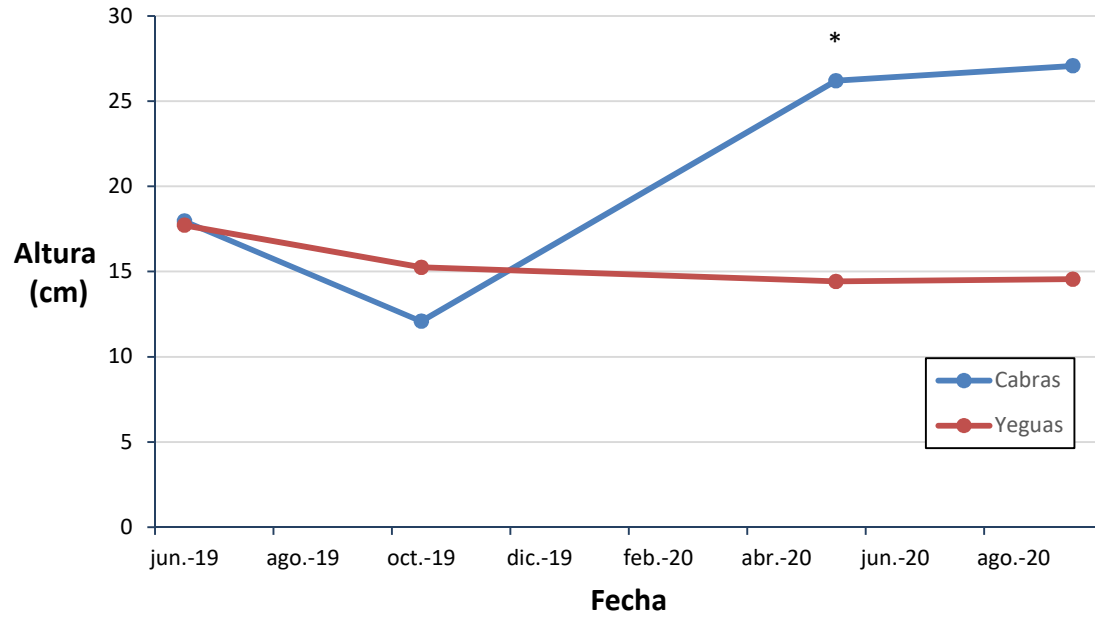


Altura media matogueira

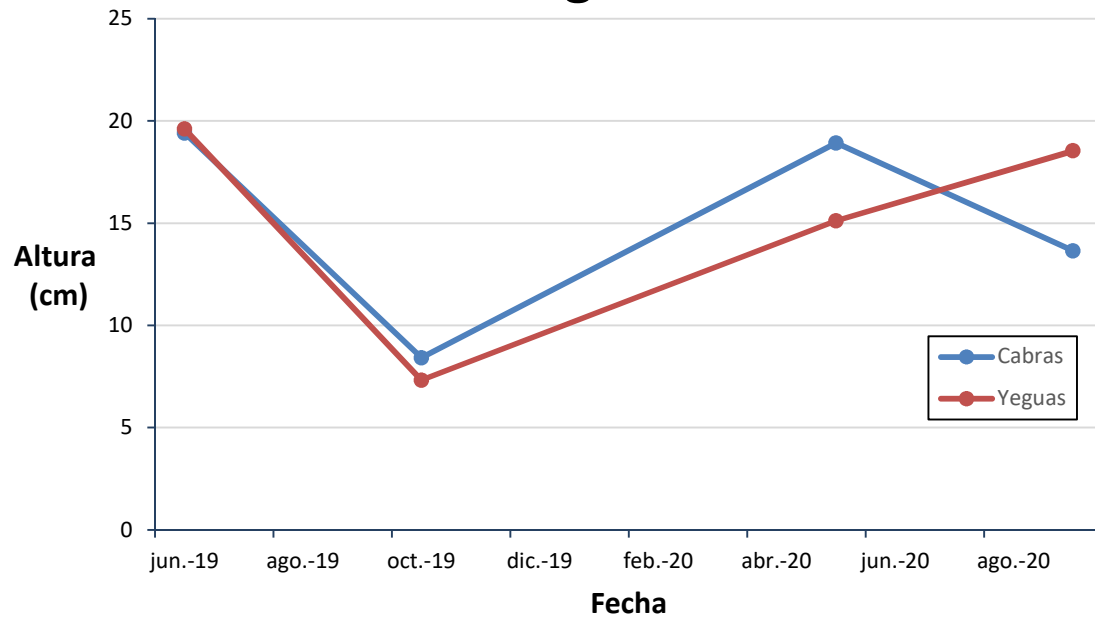


Altura

Toxo

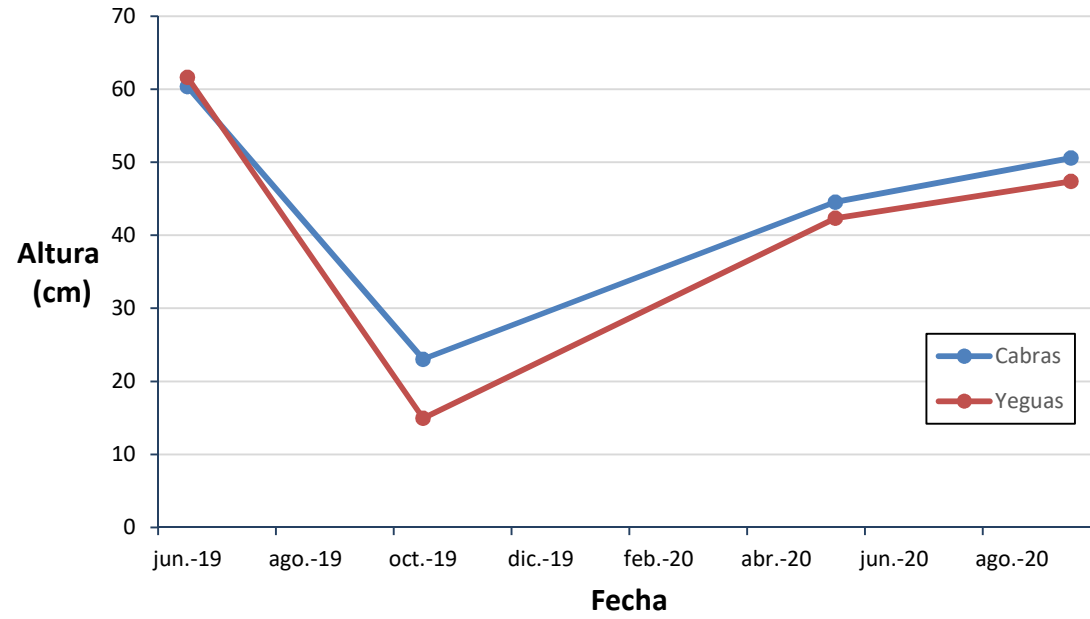


Toxo gateño

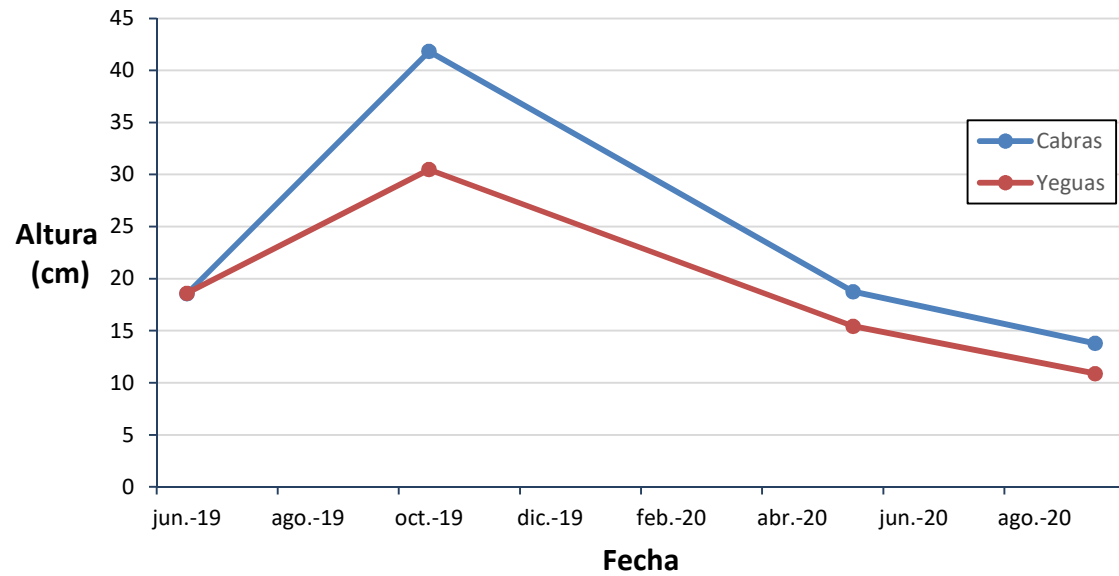


Altura

Fentos

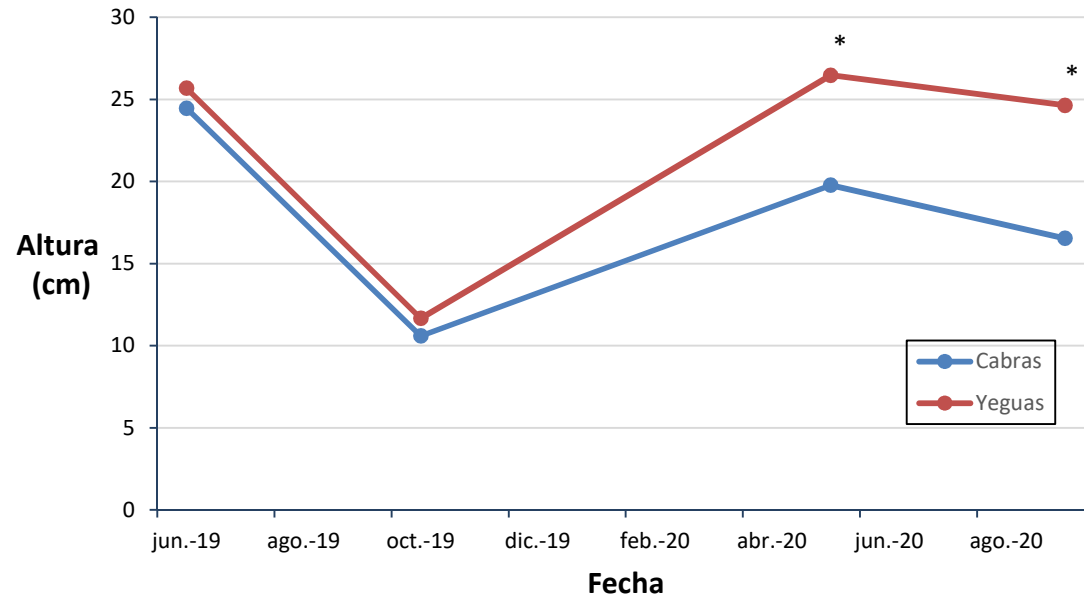


Herbáceas

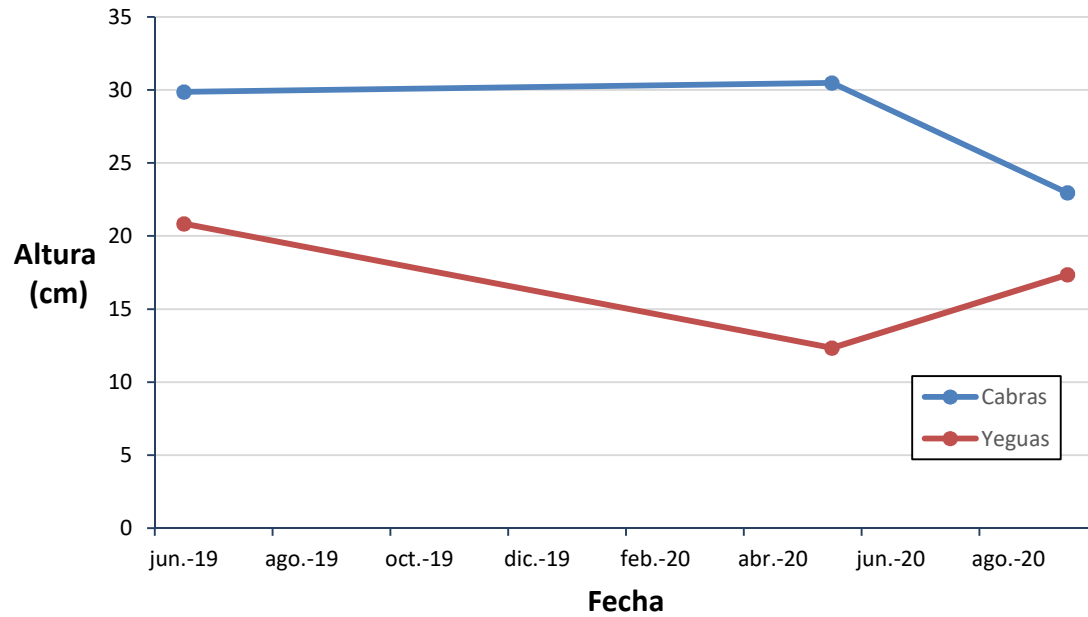


Altura

Silvas

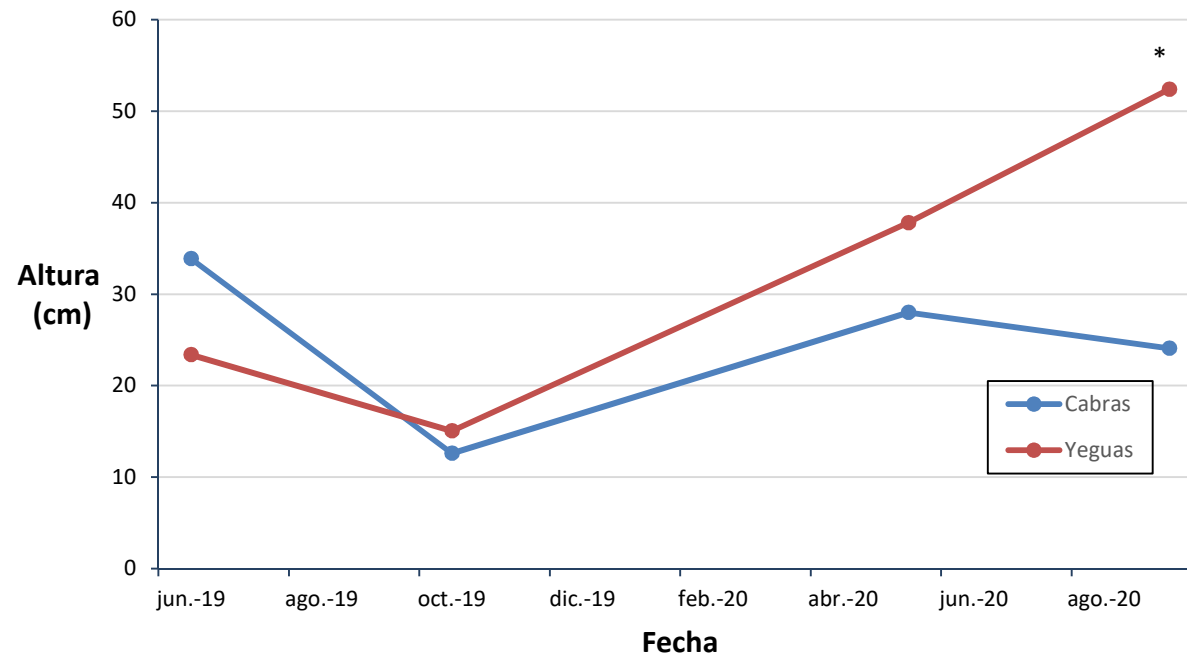


Xestas

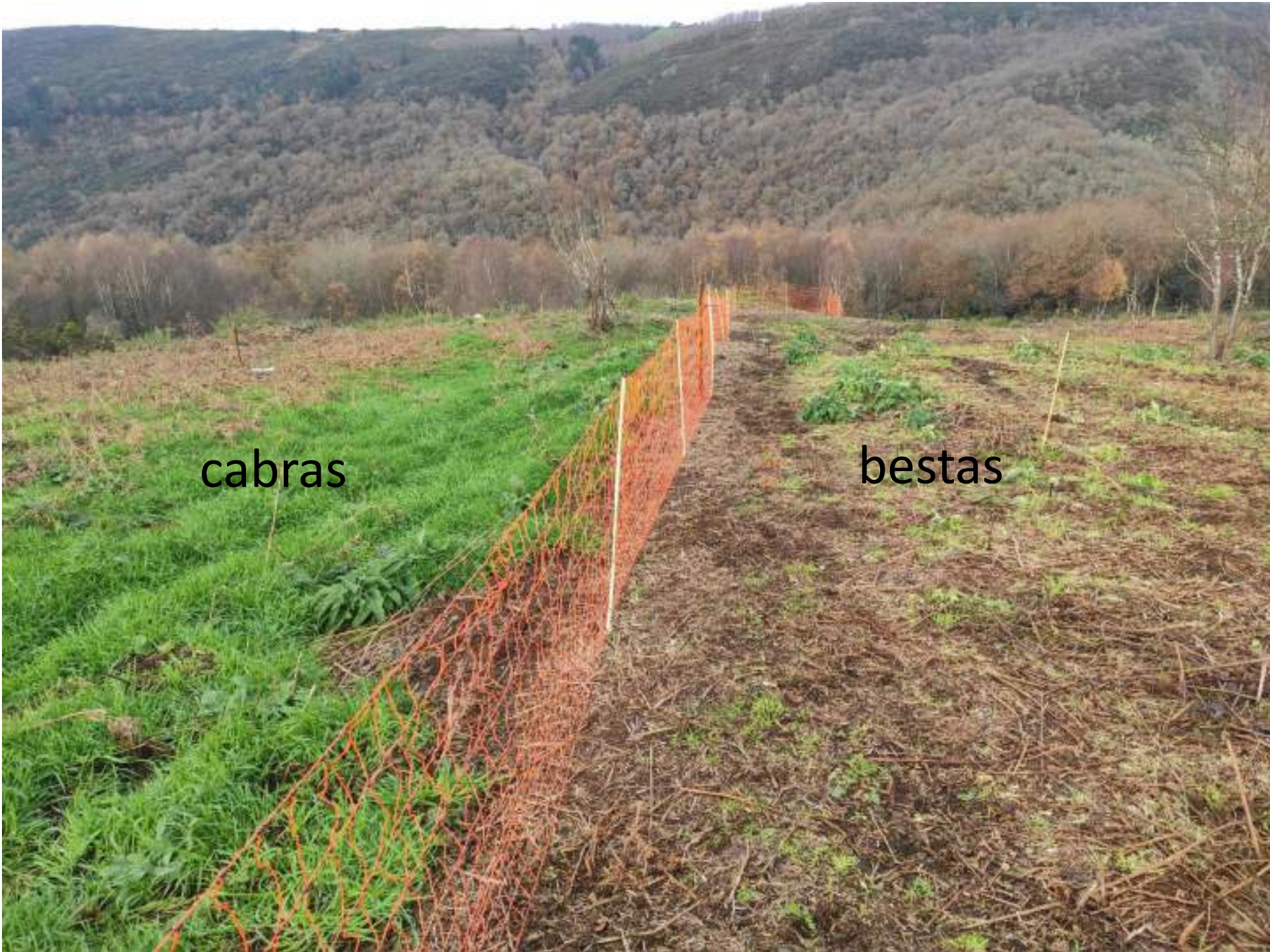


Altura

Árboles-arbustos



Altura



cabras

bestas

bestas



bestas





cabras





bestas



cabras



cabras

bestas



GRAZAS